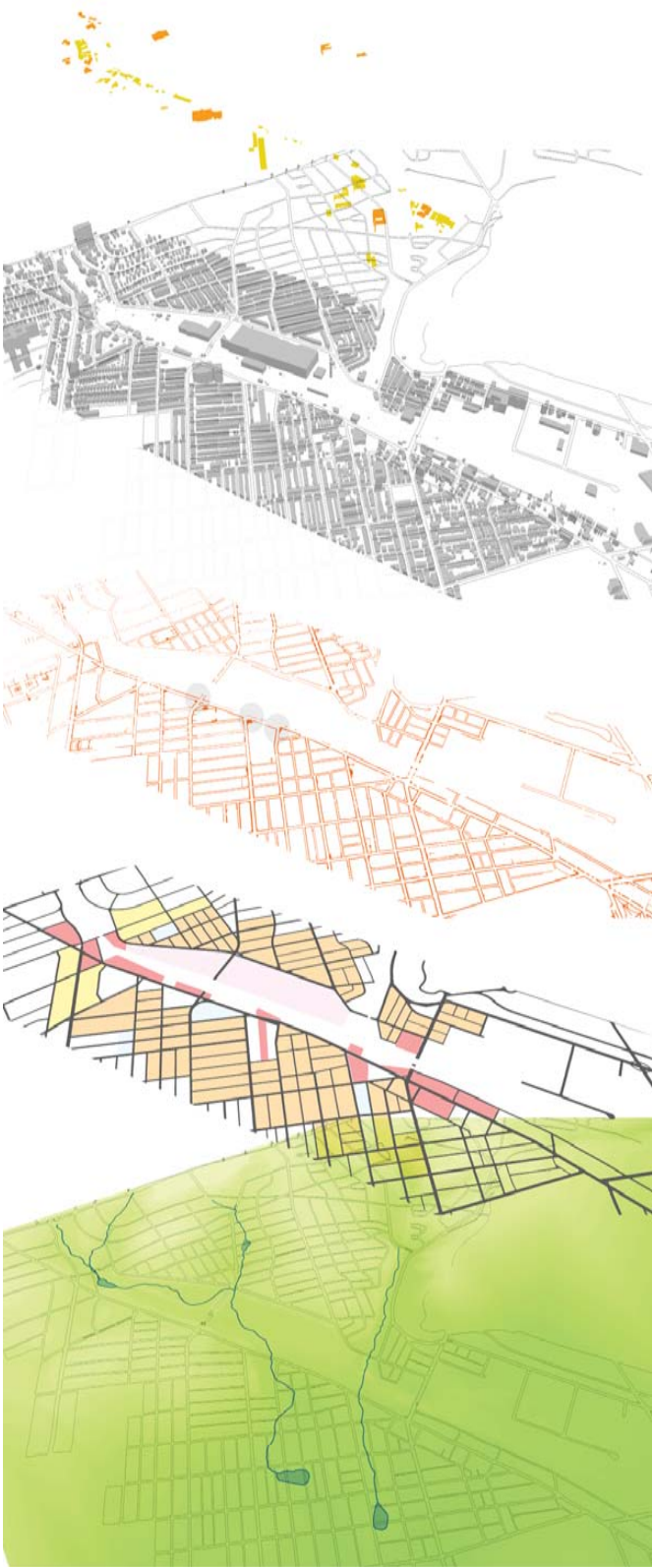


The Lancaster Turnpike crosses the Mill-creek watershed at a critical juncture in its flow.

Topographically, the transect intercepts at the approximate convergence of at least three primary nautral paths of flow from the North and Northwest. These former tribu-tary paths follow what is currently 63rd, 59th, 56th.

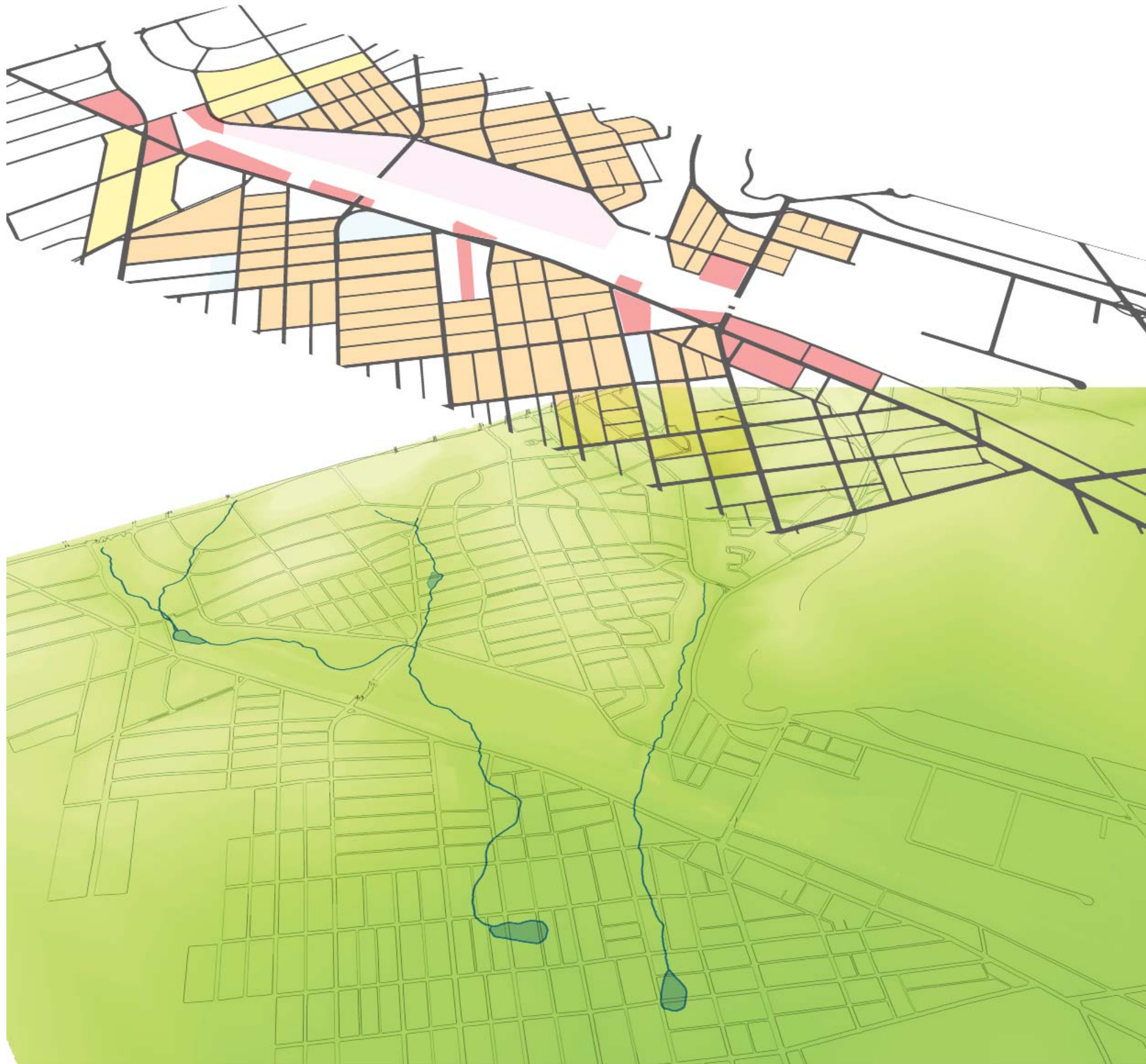
The transect has a cross-section which swells in width and depth, with a middle basin thickened by excavation for the rail-road and ancillary facilities. The bottom of the excavated basin has a flat bed that gently slopes Southeast, with crossing points at 59th and 52nd. Runoff from the 59th street flow path would likely be distributed more or less evenly on either side of the bridge crossing mass. There is also a mound of higher land running down the center of the basin to the north of 59th. The inhabited land on north and south edges has been flattened, creating an abrupt change in el-elevation along much of the basin.

Development has followed strikingly con-tracting patterns between North and South. The North side sparse, fluctuating light-industrial use, with frequent vacancy. The Southern edge is characterized by a mix of residential, community, and low-density commercial.



MILL CREEK WATERSHED TRANSECT ANALYSIS - LANCASTER TRANSECT

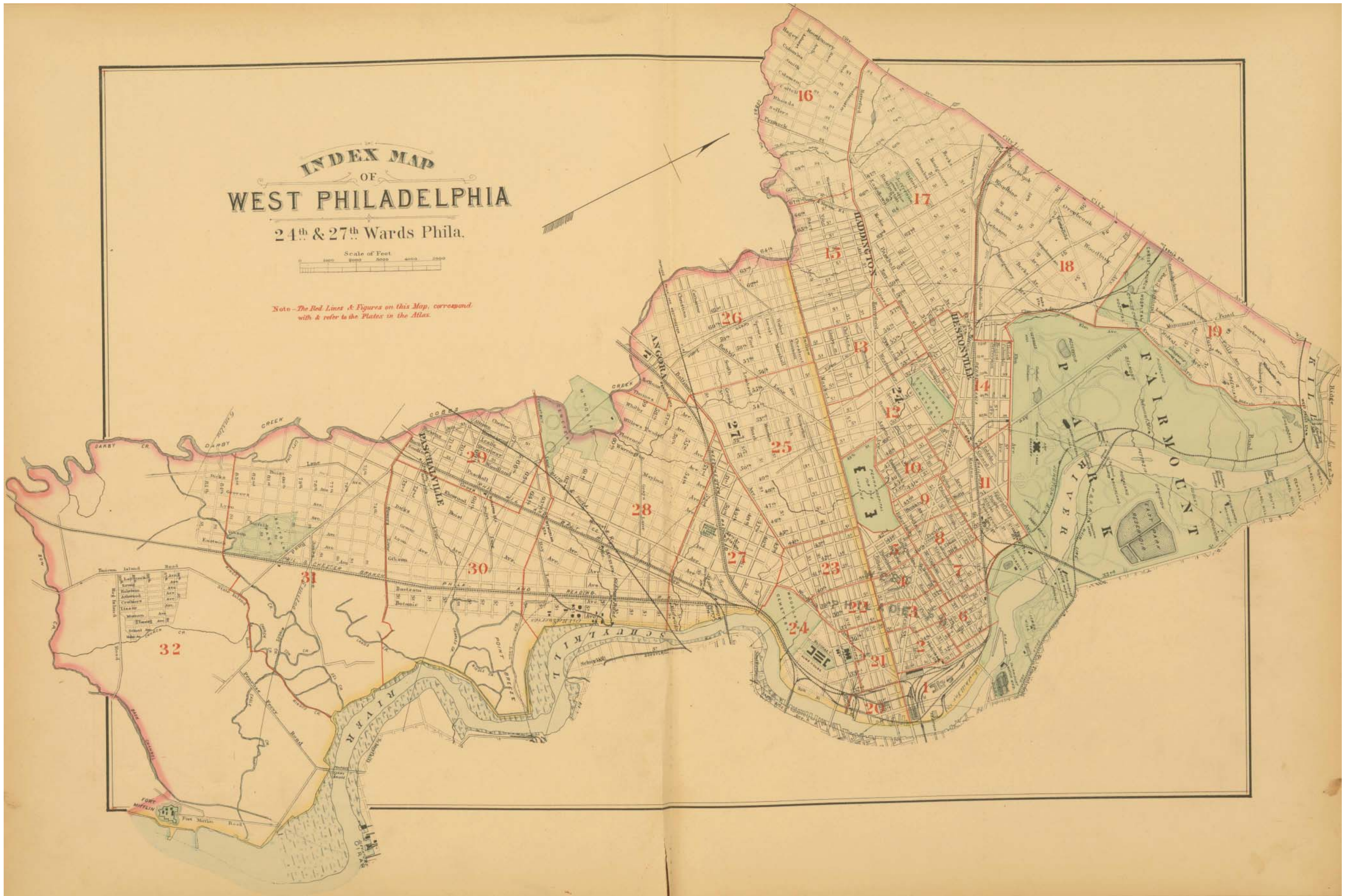
Axonometric View & Longitudinal Section - KEY -



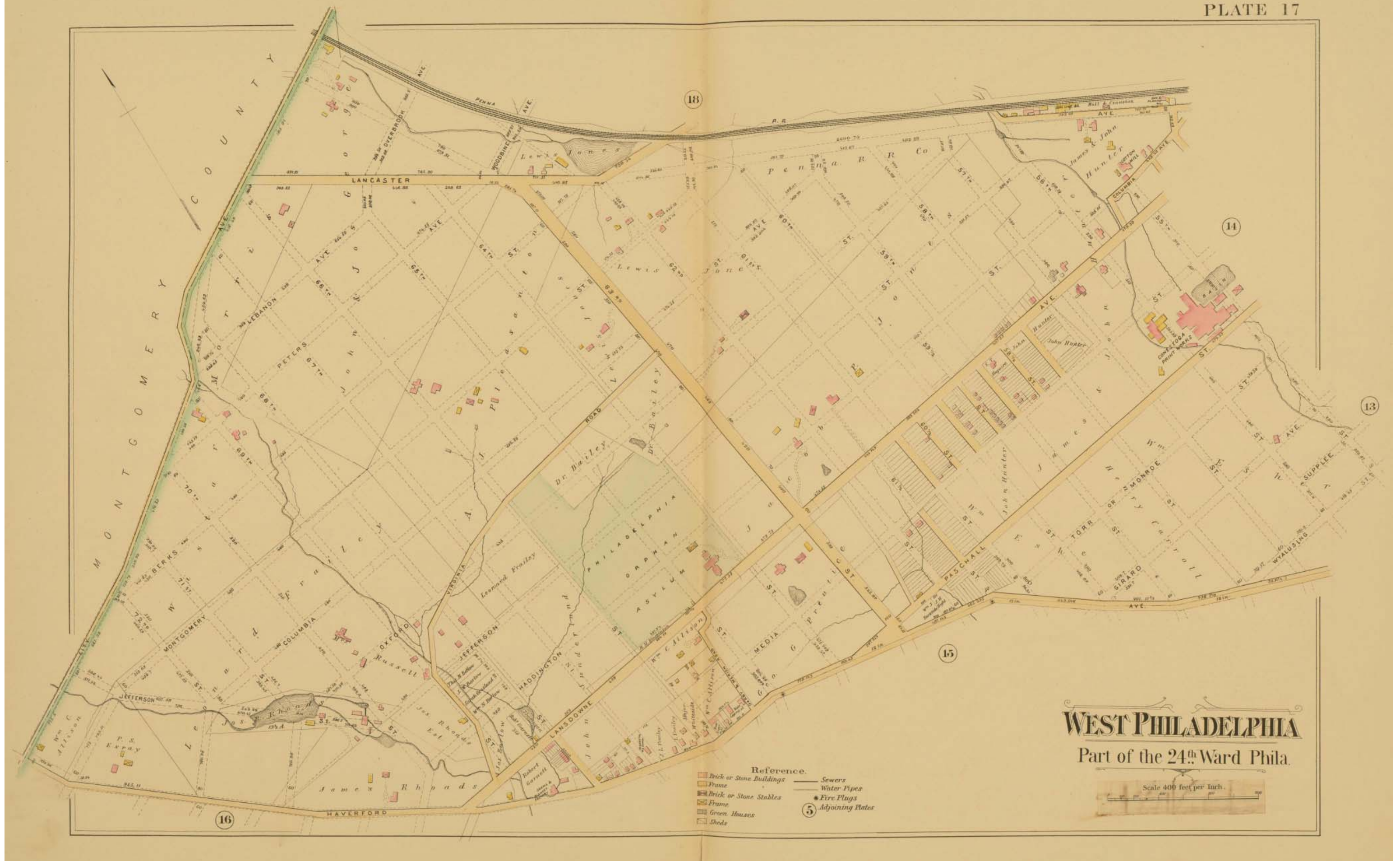
MILL CREEK WATERSHED TRANSECT ANALYSIS - LANCASTER TRANSECT



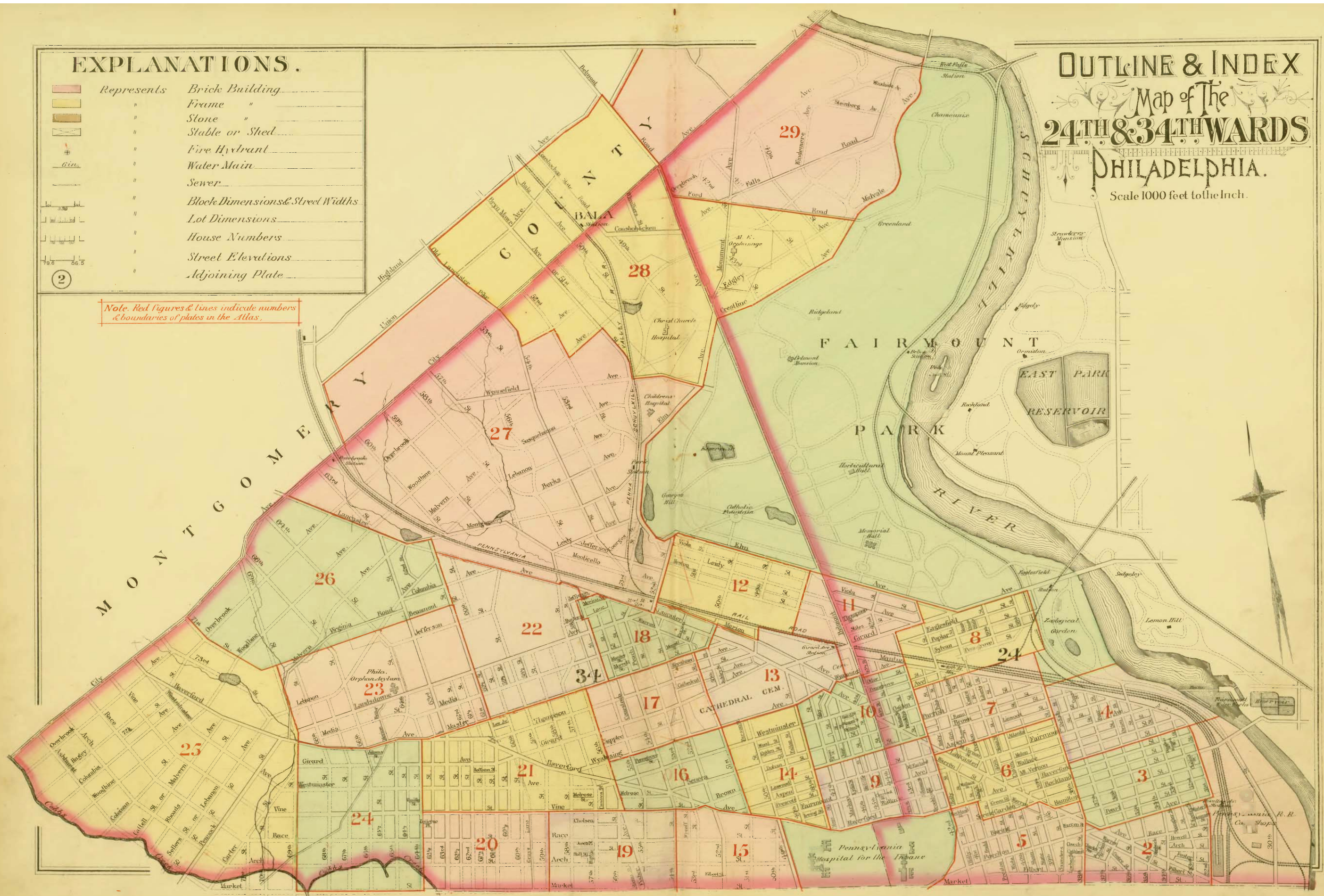
MILL CREEK WATERSHED TRANSECT ANALYSIS - LANCASTER TRANSECT



MILL CREEK WATERSHED TRANSECT ANALYSIS - LANCASTER TRANSECT

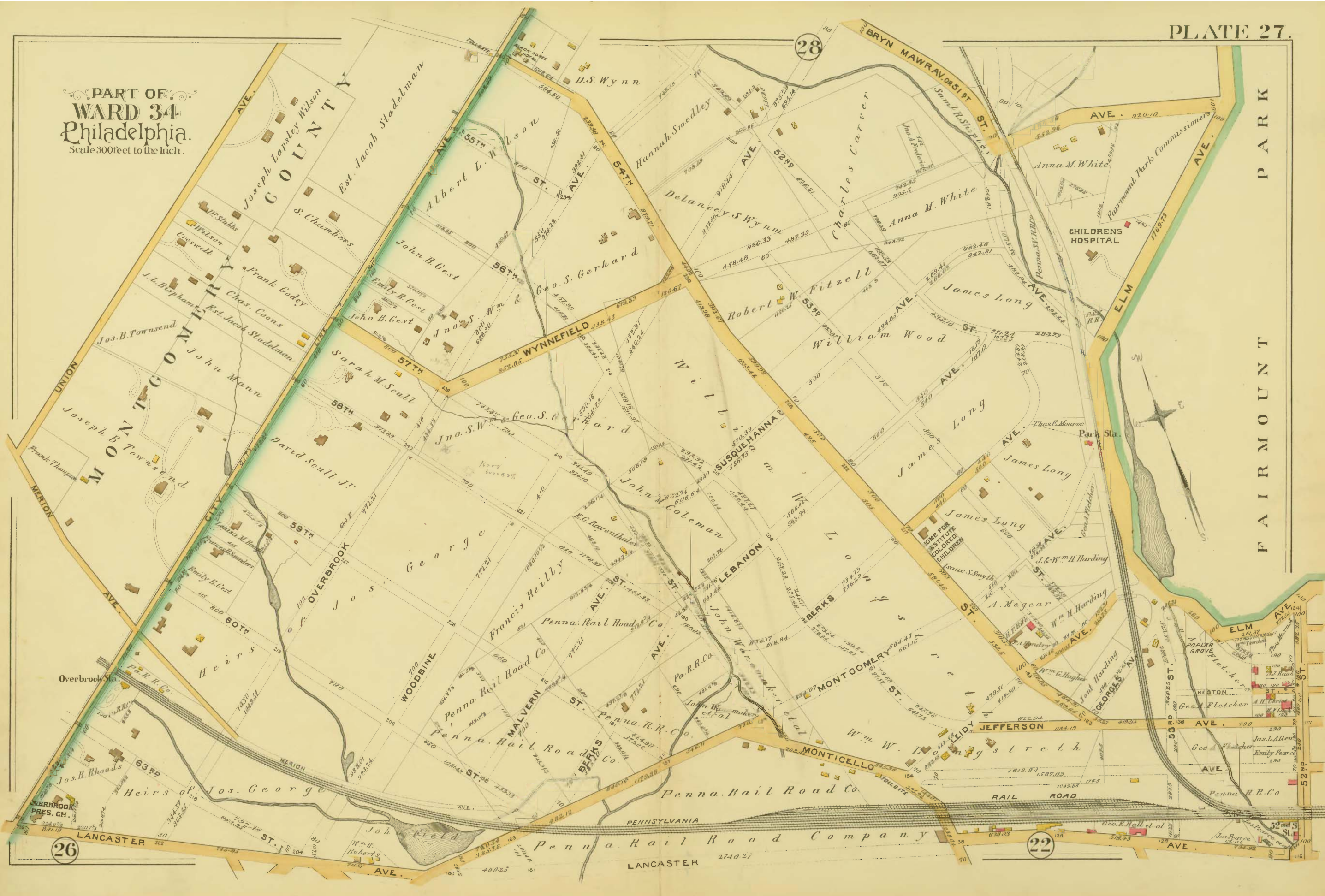


MILL CREEK WATERSHED TRANSECT ANALYSIS - LANCASTER TRANSECT

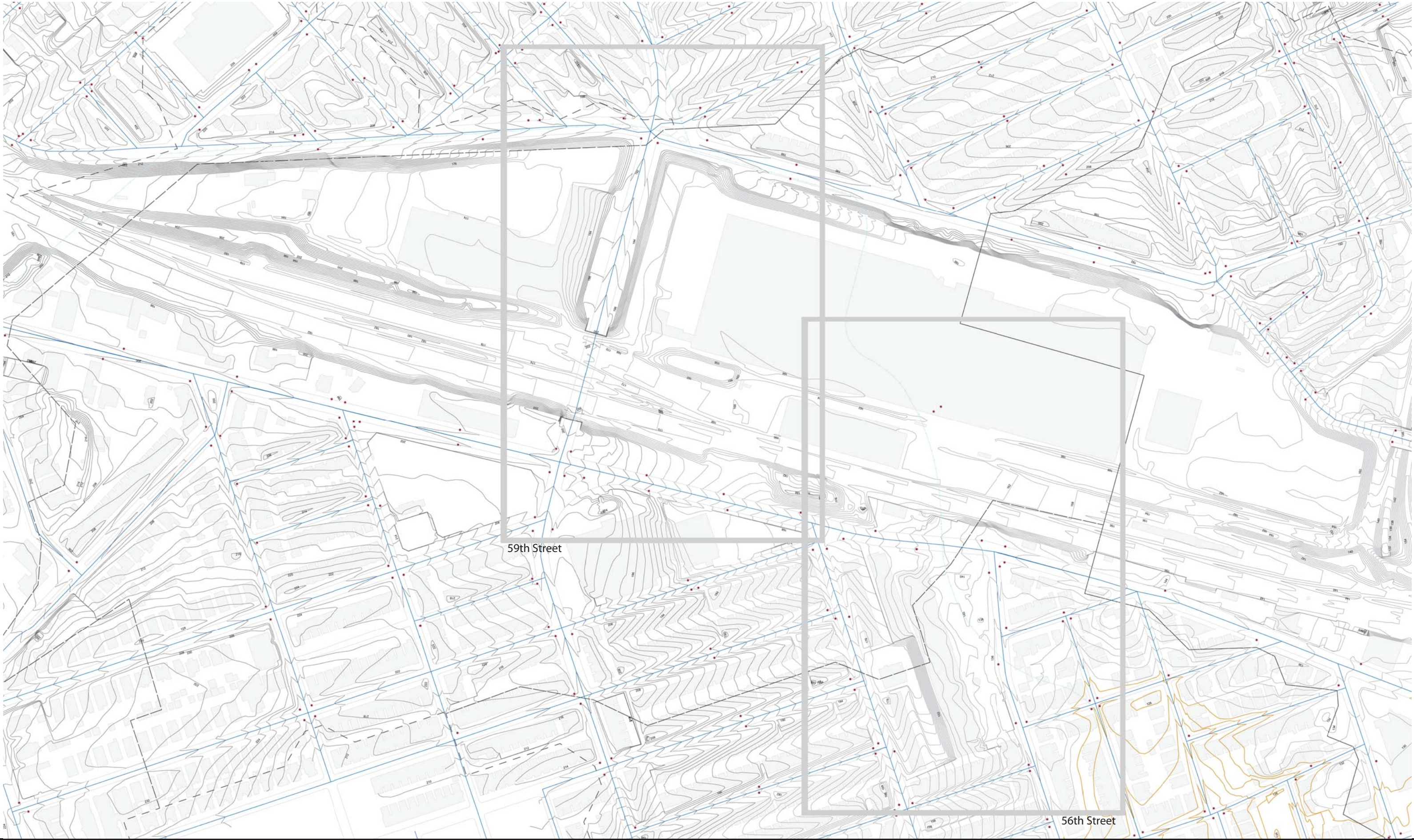


MILL CREEK WATERSHED TRANSECT ANALYSIS - LANCASTER TRANSECT

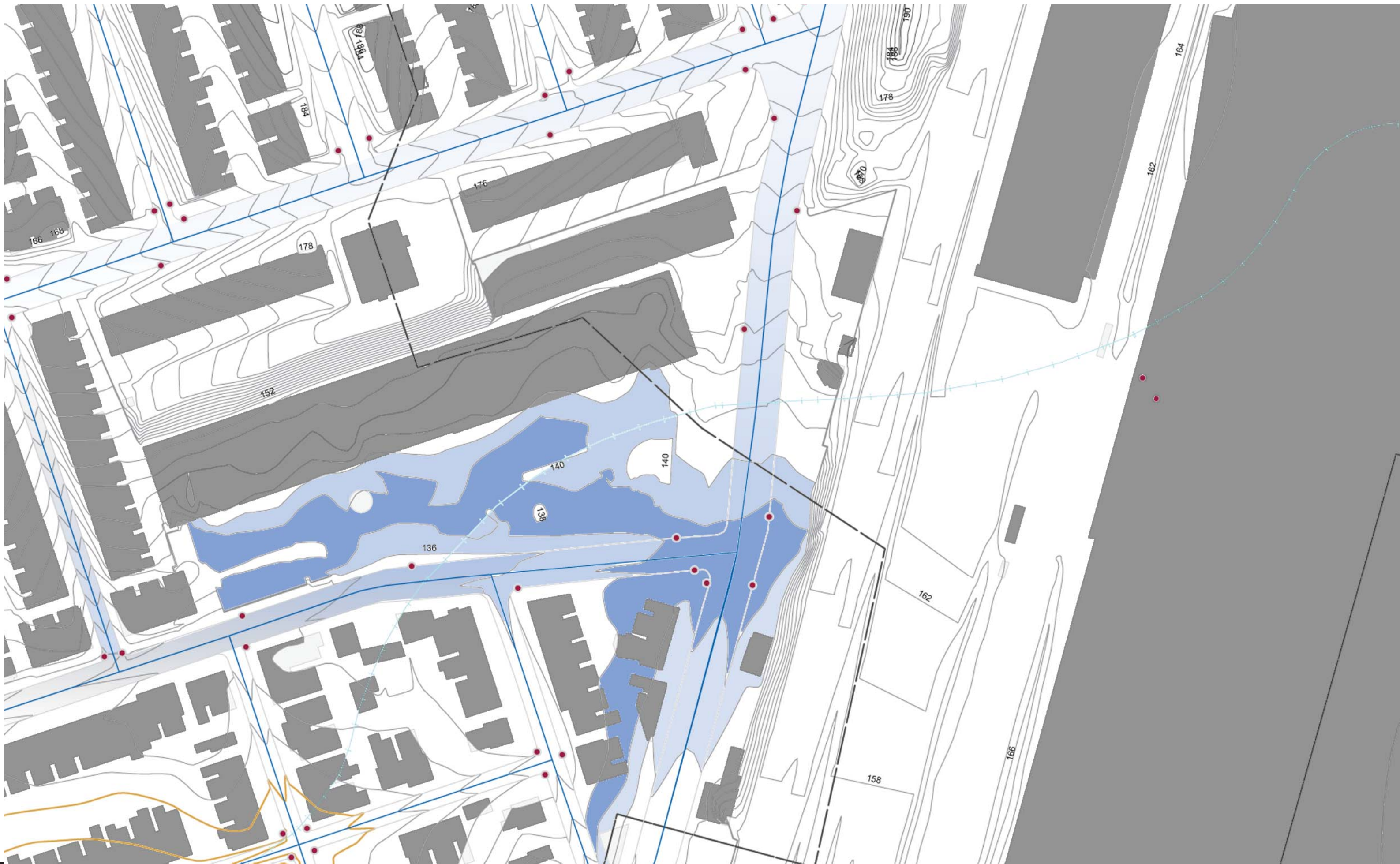
PART OF
WARD 34
Philadelphia.
Scale 300 feet to the Inch.



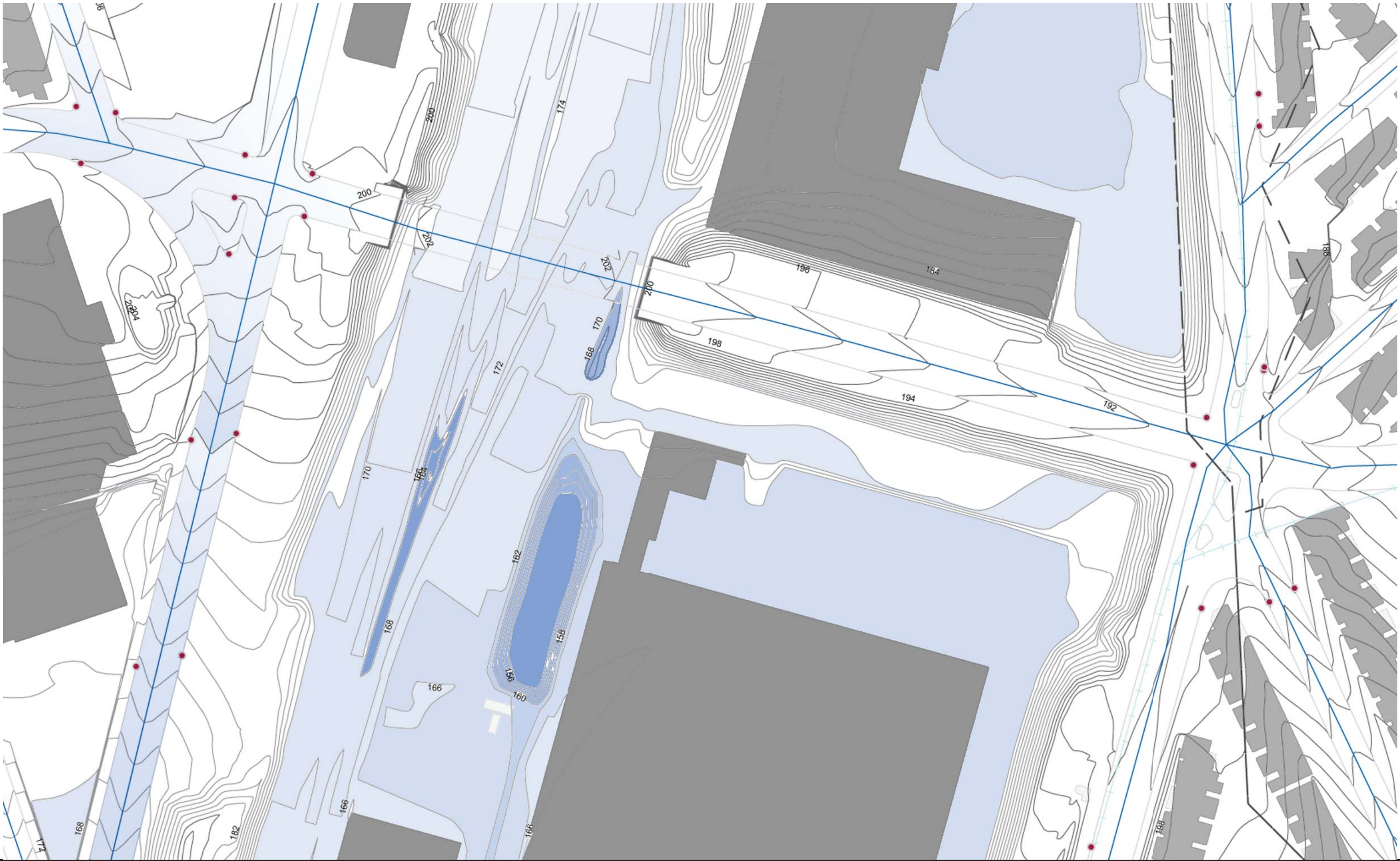
MILL CREEK WATERSHED TRANSECT ANALYSIS - LANCASTER TRANSECT



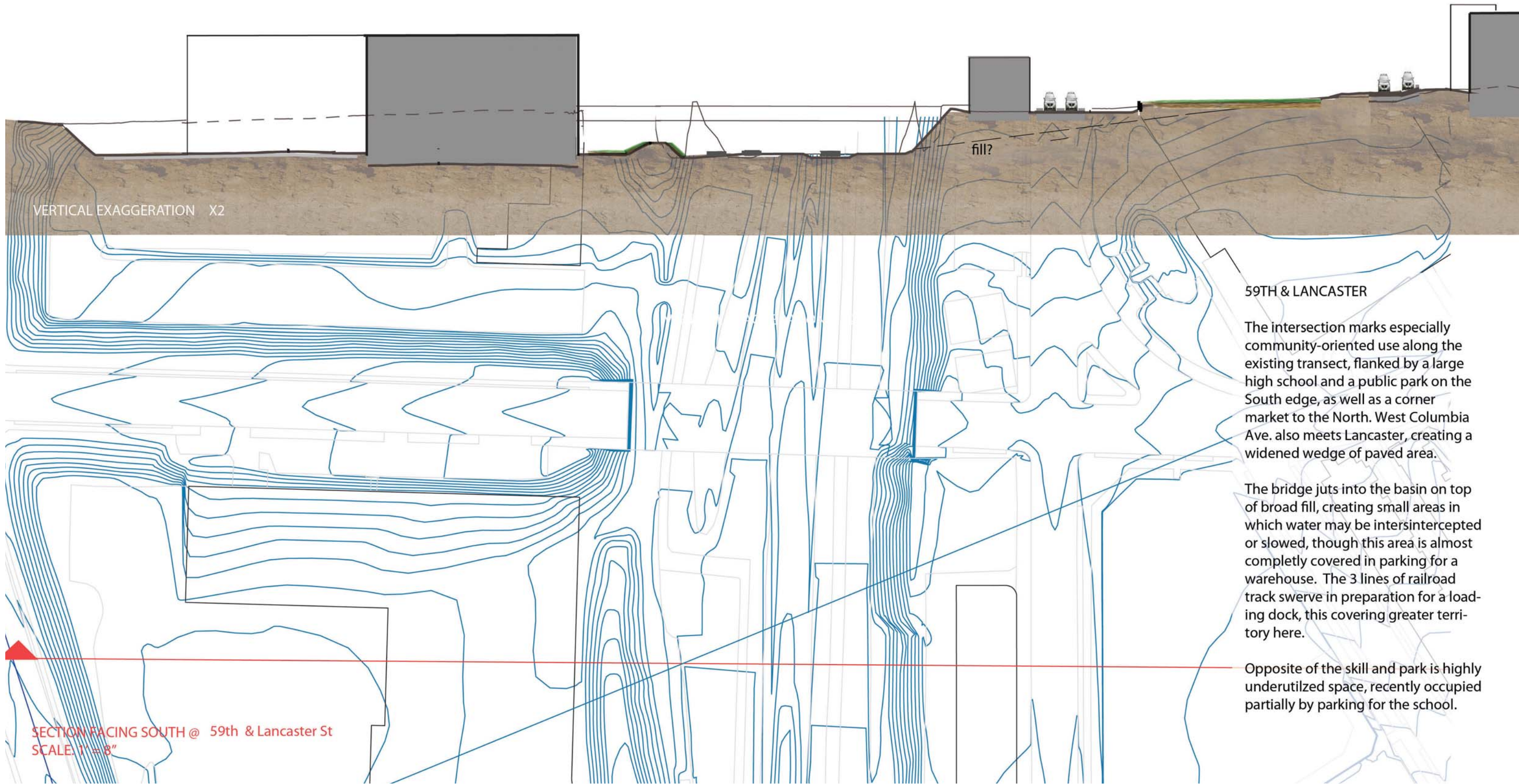
MILL CREEK WATERSHED TRANSECT ANALYSIS - LANCASTER TRANSECT

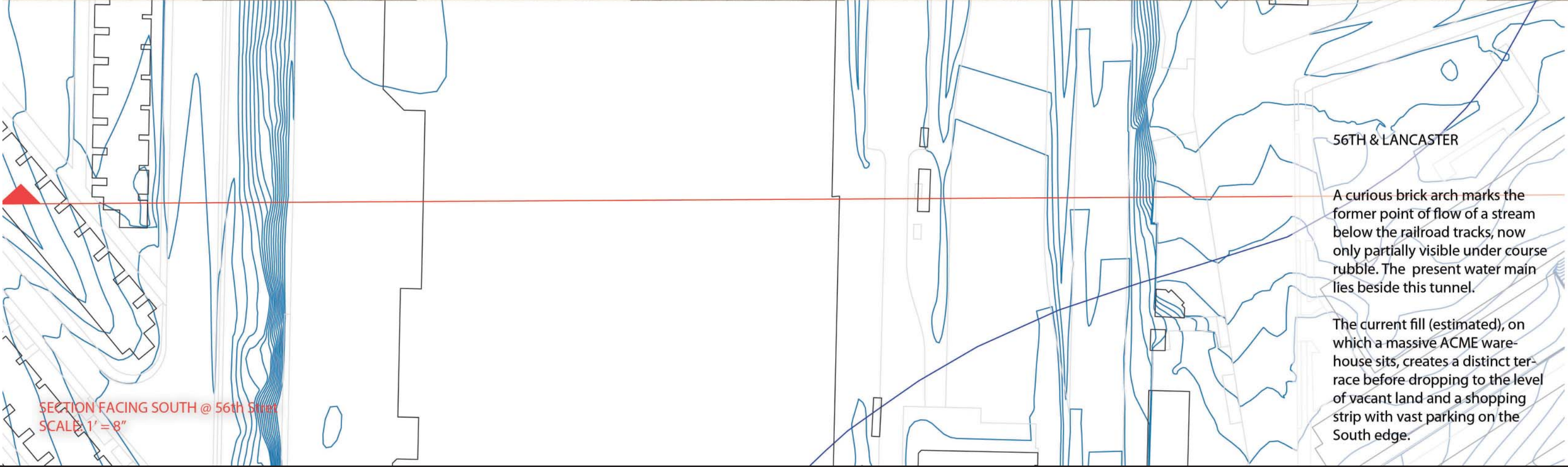
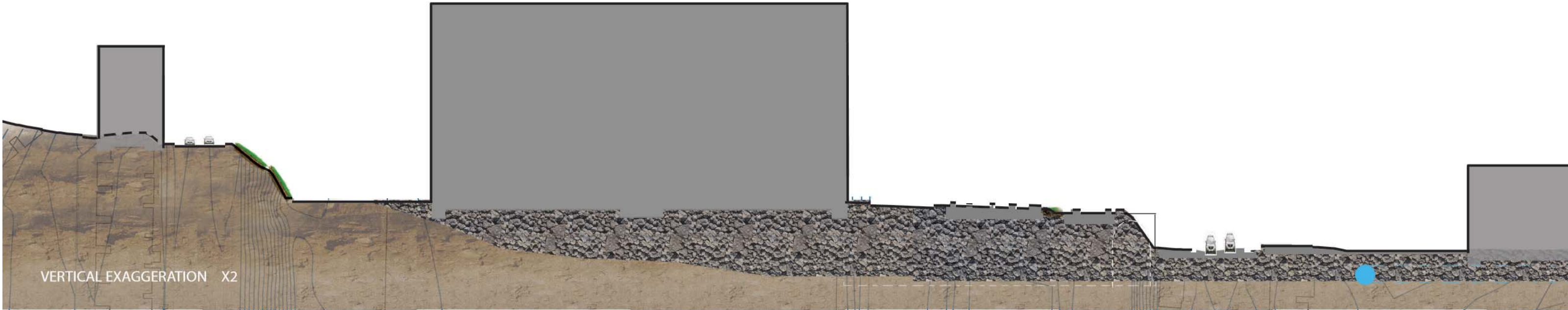


MILL CREEK WATERSHED TRANSECT ANALYSIS - LANCASTER TRANSECT



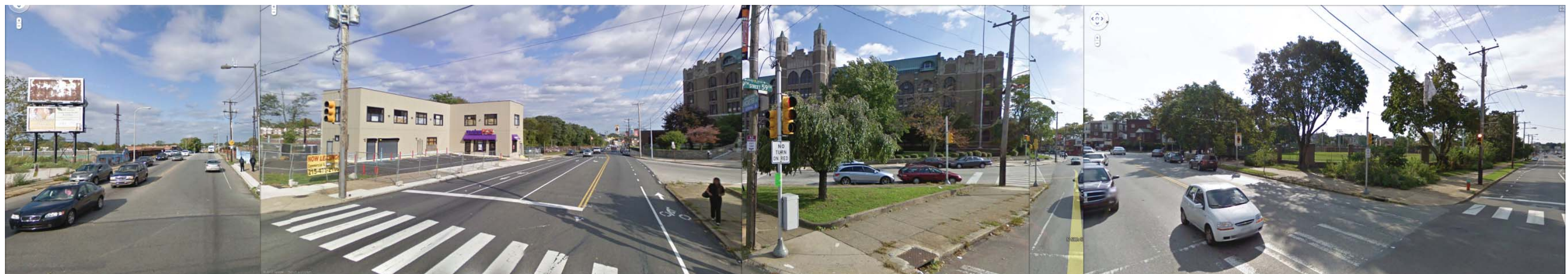
MILL CREEK WATERSHED TRANSECT ANALYSIS - LANCASTER TRANSECT





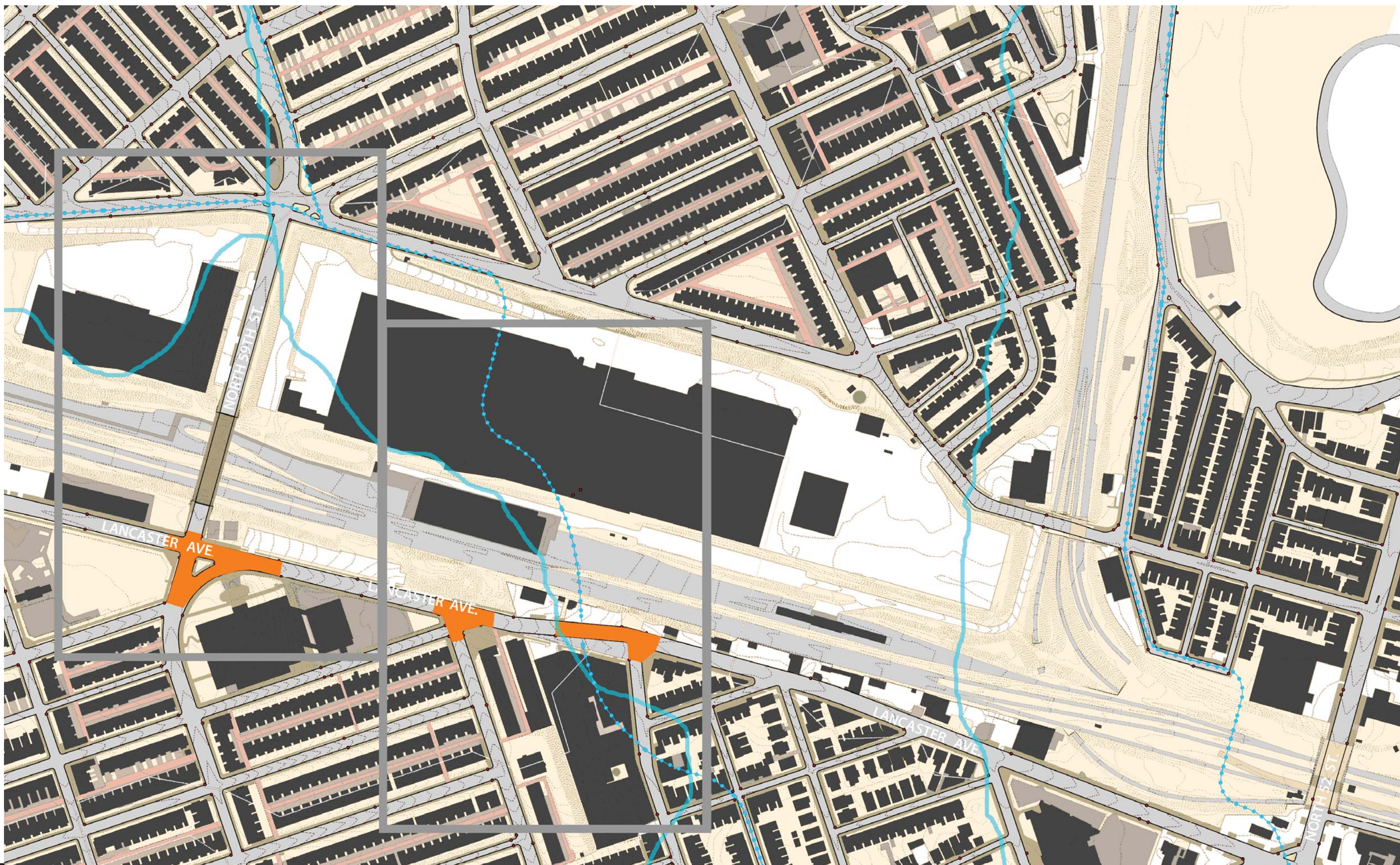


56th Street & Lancaster Avenue.

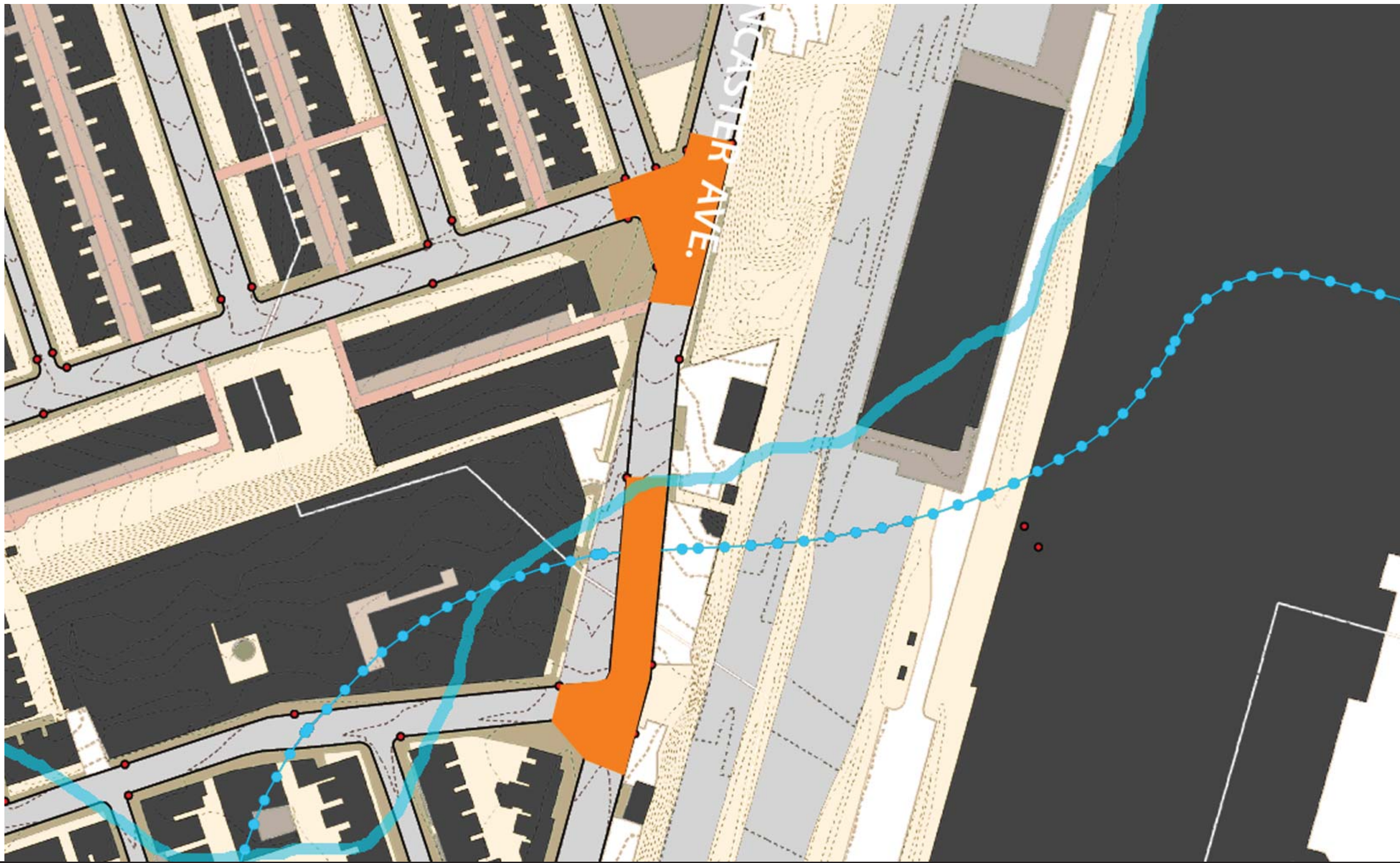


58th Street & Lancaster Avenue.

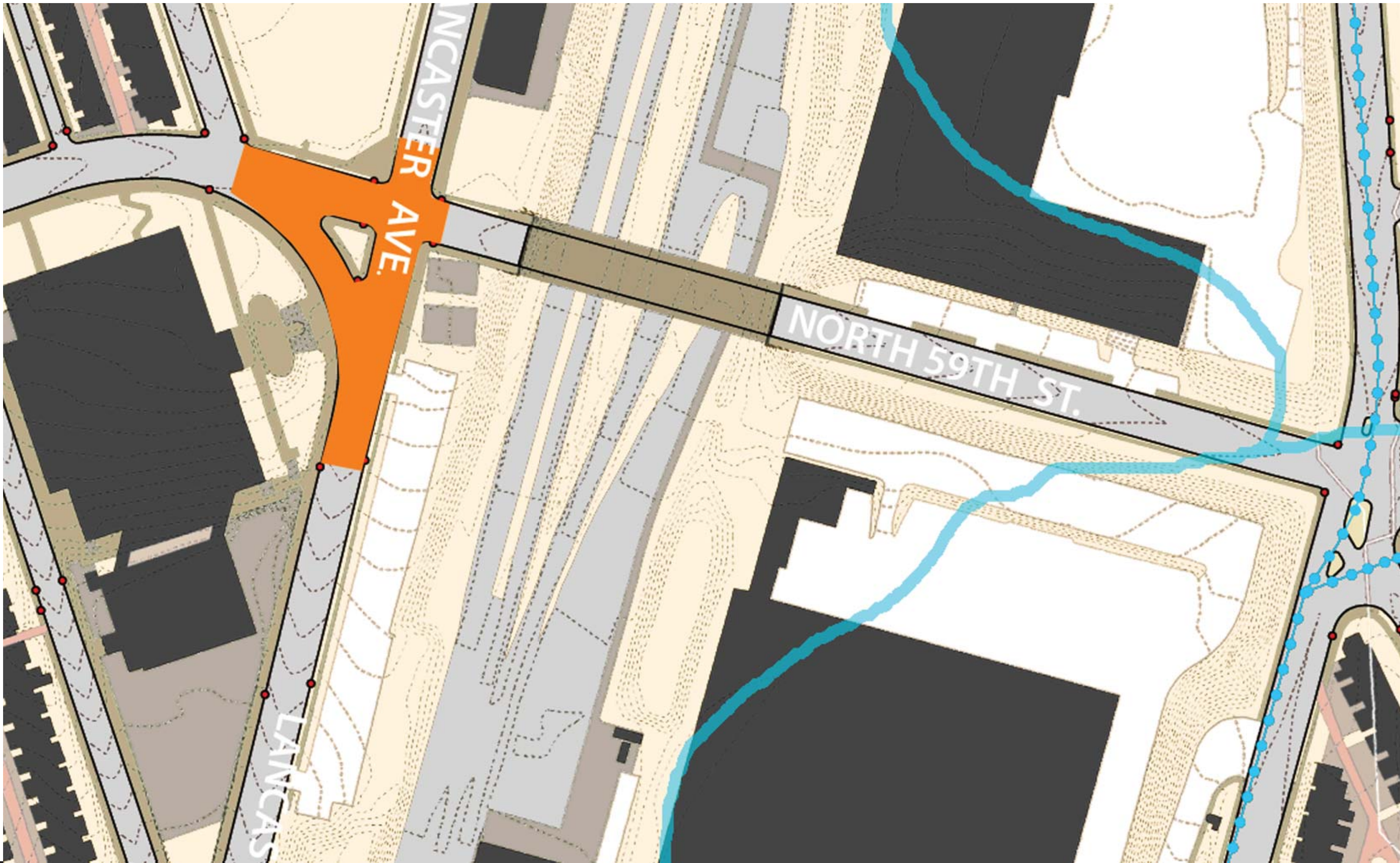
MILL CREEK WATERSHED TRANSECT ANALYSIS - LANCASTER TRANSECT



MILL CREEK WATERSHED TRANSECT ANALYSIS - LANCASTER TRANSECT



MILL CREEK WATERSHED TRANSECT ANALYSIS - LANCASTER TRANSECT



MILL CREEK WATERSHED TRANSECT ANALYSIS - LANCASTER TRANSECT