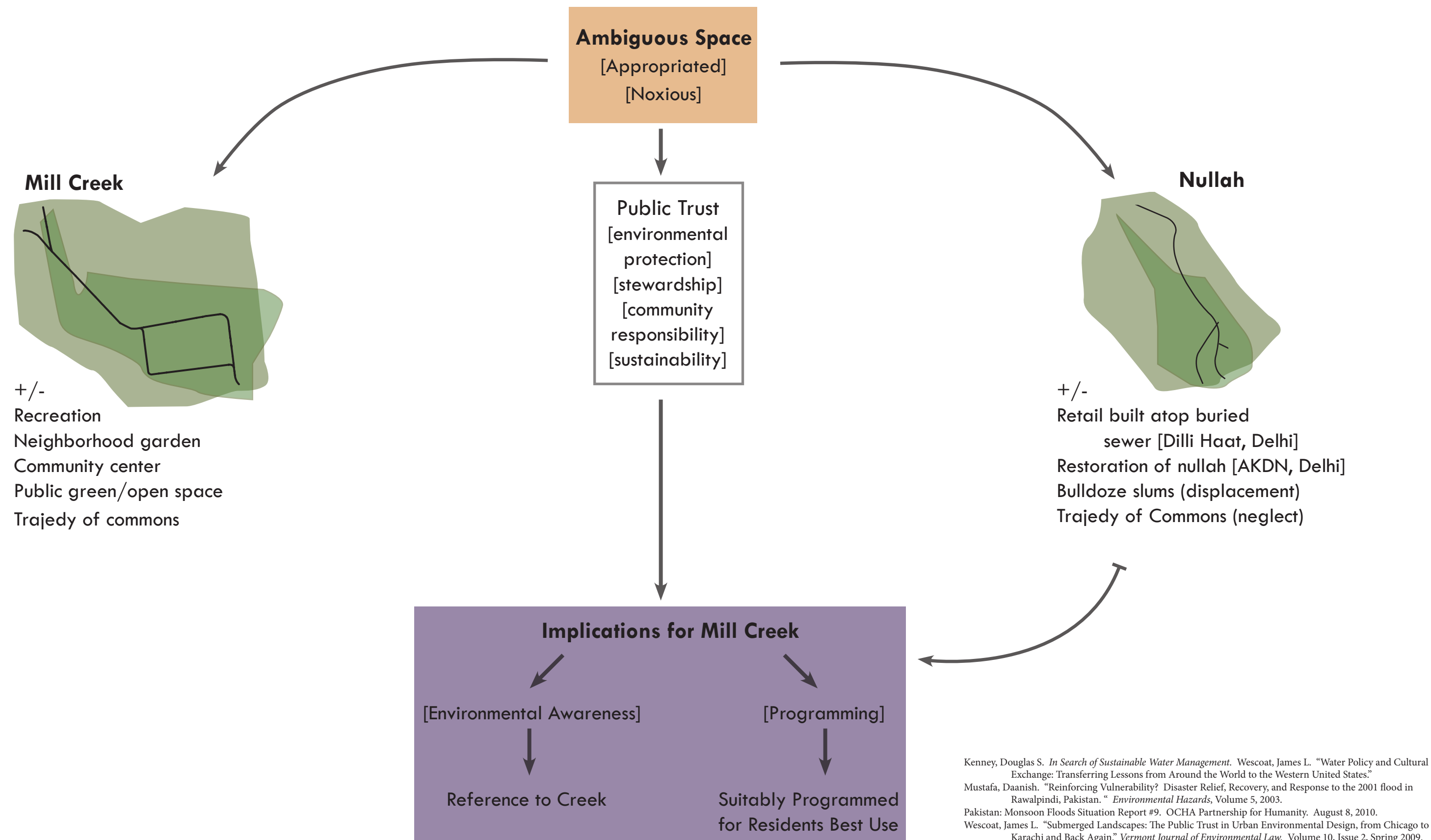
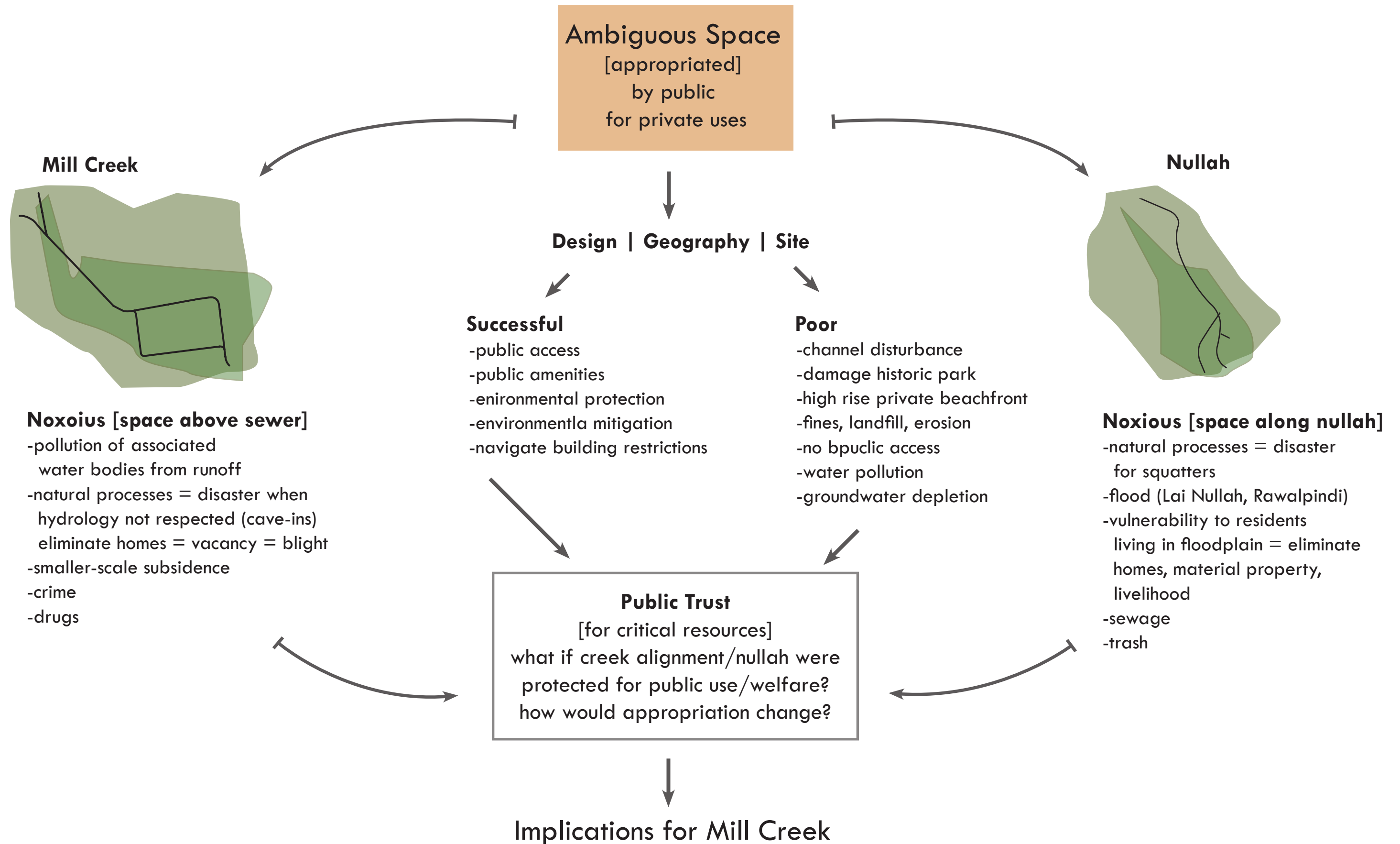


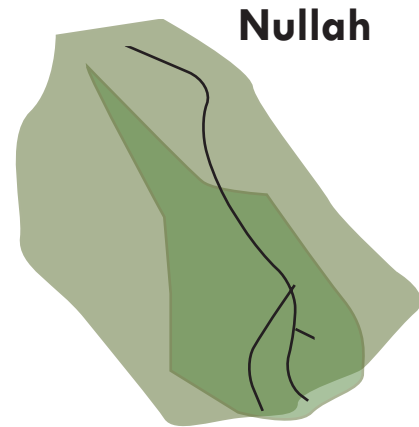
Enhancing Public Use at Urban Waterways

Jaime R. Young





Implications for Mill Creek Design



Nullah

Bulldozing

slum removal to widen nullah & clear out - leaves people homeless

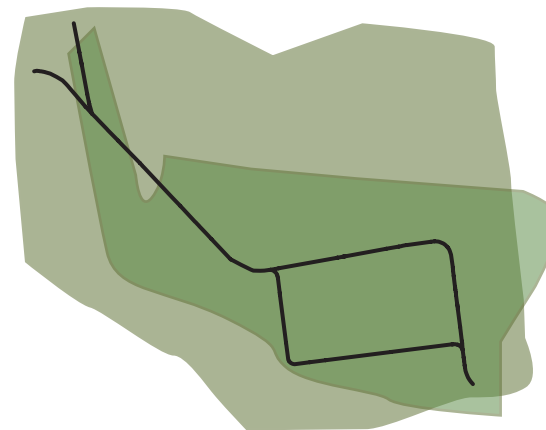
Development [Dilli Haat]

bury drainage decreases awareness but makes profitable & pleasant public space out of formerly shunned

Restoration [AKDN]

of hydrology & bank

Mill Creek



Program

Give back to public for community amenity:
public plaza, market stalls, performance space
-positive private interest in public space
-stronger public presence/use

Stronger public use/more appropriate program to displace negative private appropriation

Environmental Awareness

Highlight creek's existence
Reference creek with strong, cohesive design
Stronger sense of place

Protection downstream
Infiltration throughout watershed
Personal responsibility